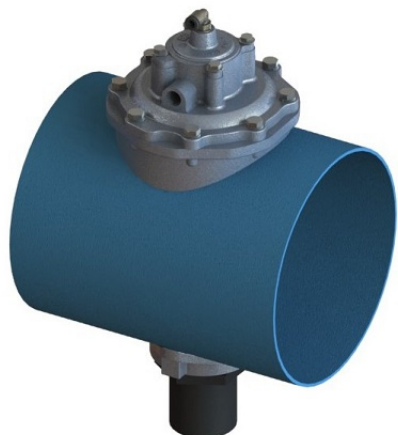




HEADER TANKS WITH INTEGRATED VALVES

HEADER TANK Ø 8"



2" INTEGRATED VALVE With Pneumatic Valve

Our most widespread solution with valves integrated in the tank, easy to assemble and with high cleaning performance



PRODUCT CERTIFICATIONS

STANDARD



OPZIONALI



TANK TECHNICAL FEATURES

Features	Valori
Header Design Pressure	Max 8 Bar
Header Volume	35 L/m
Carbon Steel PED Design Temperature	-20°C ; +70°C
Stainless Steel Header PED Temperature	-40°C ; +100°C
Header Standard Color For Carbon Steel	RAL 5012

VALVE TECHNICAL FEATURES

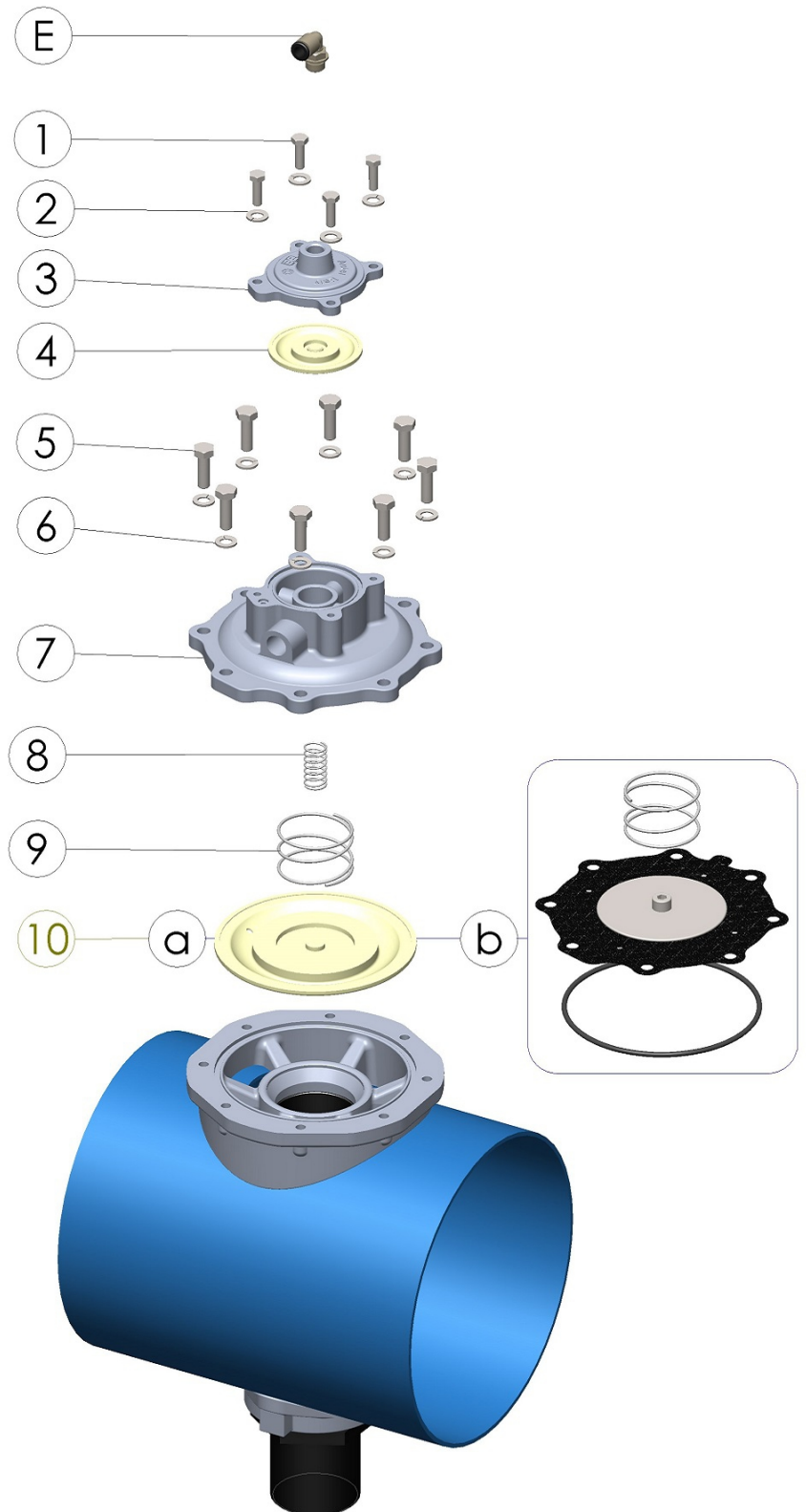
Features	Values
Out	Pipe 2"
In	Pipe 2"


VALVE TECHNICAL FEATURES

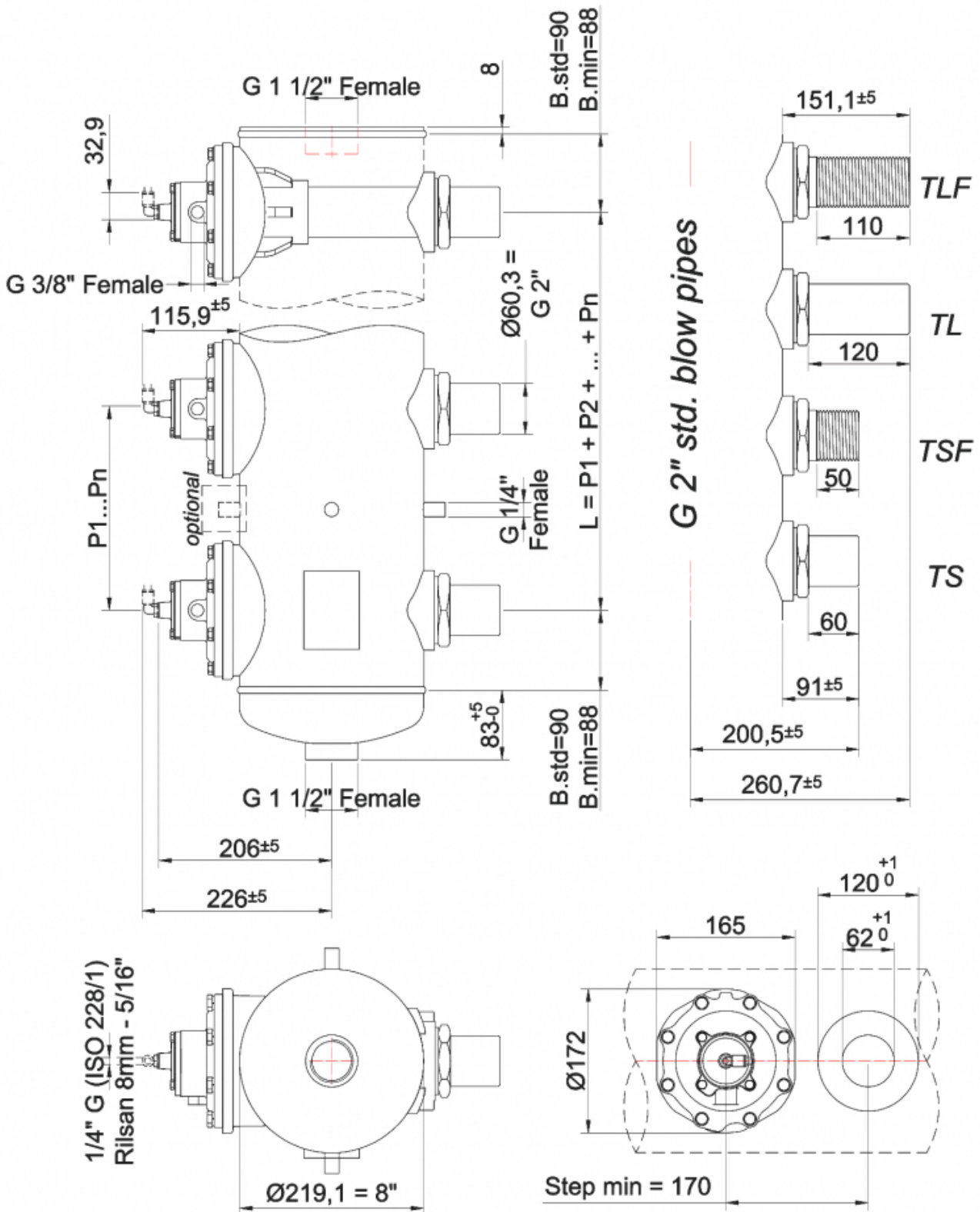
Features		Values
Working Pressure		1.5-8 bar
Standard Temperature Range		-40°C;+100°C
High Range Temperature		-20°C;+200°C
Kv		120 m ³ /h
Weight		4.4-4,8 kg
Protection Level		IP65
Air quality classes (ISO 8573-1)	For Solid	2
	For Water with T > +3°C	4
	For Water with -20°C < T < +3°C	3
	For Water with -40°C < T < -20°C	2
	For Oil	1


PARTS LIST

No.	Description	Material
1	Screw M6	SS
2	Washer	SS
3	Cover 3/4"	Die Cast Alu
4	Diaphragm 3/4"	Die Cast Alu
5	Screw M8	SS
6	Washer	SS
7	Cover 2"	Die Cast Alu
8	Spring	SS
9	Spring	SS
10a	STD Diaphragm 2"	TPE
10b	HT Diaphragm 2" Kit	NBR+PTFE
E	Optional Fitting	Nickeled Brass

Immagine


DIMENSIONAL LAYOUT



CONSUMPTION GRAPHS

